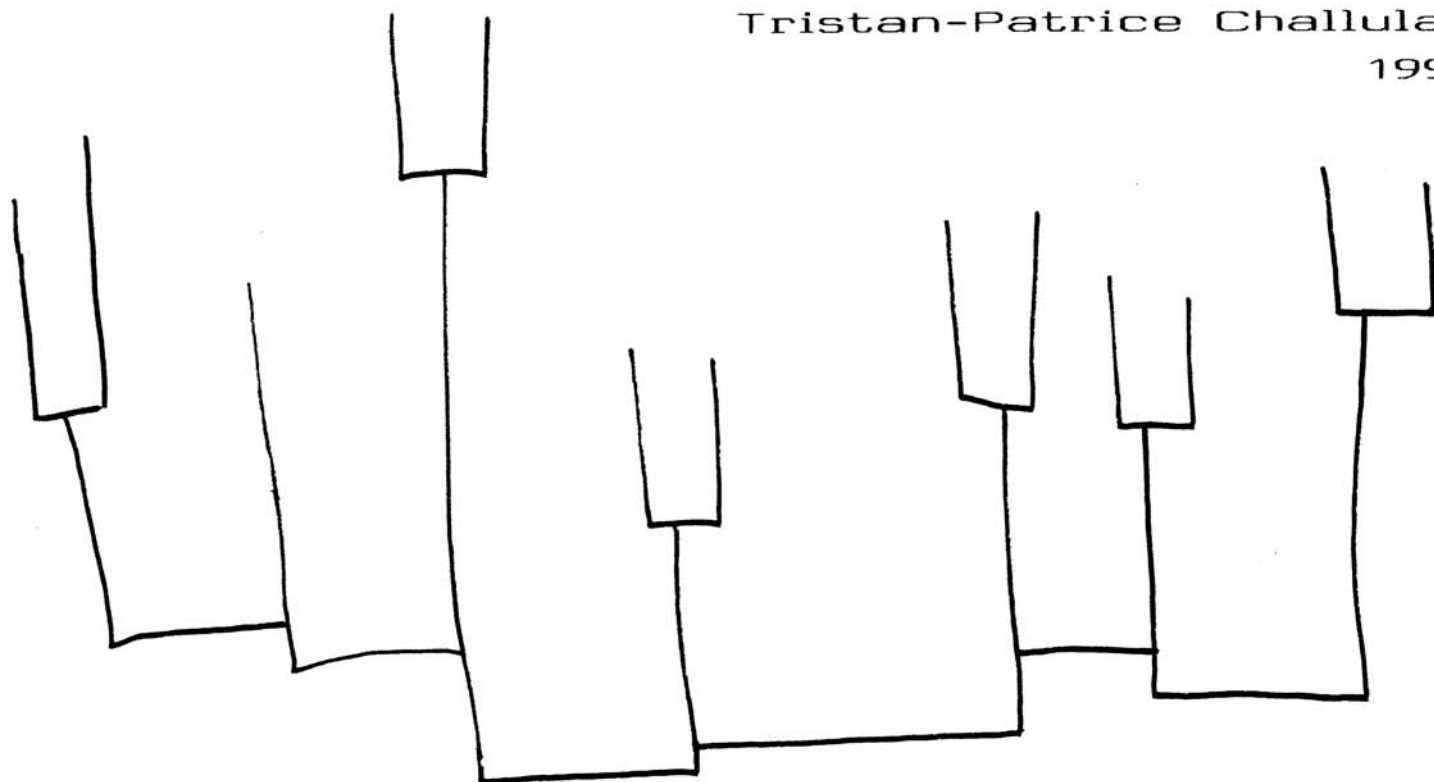


Un nouvel art de toucher
le Clavecin.

Tristan-Patrice Challulau.
1991.



Op. 30.

L'ÉCRIT

22 rue Valrose

13090 Aix-en-Pce. France.

Tristan-Patrice CHALLULAU. (1959)

Sa musique a été jouée dans toute l'Europe, surtout après l'obtention du Mozarthauptpreis (Wien) et le Grand Prix Reine Elisabeth (Bruxelles). Il est également lauréat de vingt autres prix internationaux.

Extrait du catalogue:

- *Piano: L'oeuvre au blanc, Week-end à Java, 4^oconcerto, 5^oconcerto pour piano à 4 mains...
- *Clavecin: Un nouvel art de toucher, Préludes du 13^o ordre...
- *Carillon: Doux-amers, Rencontre...
- *Guitare: El zahir, Macumba, Espadas del poniente, 6^oconcerto...
- *Violon: L'oeuvre poétique, Immobilités et attentes(v.pno), 7^oconcerto...
- *Choeurs: Musique pour Nicolas Flamel, Une fille oiseau, Petites merveilles, Pétillantes...
- *Musique de chambre: Lamentations de Jérémie(fl.v.pno), Gold sound(cor.pno), D'Alexandra (v.vlle.pno), Acquiescement-punctuation(cl.c.h.g.vlle.pno.perc), Puissances nocturnes(5 cuivres) etc...
- *Orchestre: Iles d'or, Glissement de temps, Voyage en Orient, Morsures intimes...
- *Opéra: Dalet, la porte IV.

En tout, plus d'une centaine de pièces. Pour tous les instruments solistes, et divers groupes orchestraux ou de musique de chambre.

Notes : Pour le concert : ne pas jouer la pièce 5. Et les pièces 7 et 12 sont facultatives.
Pièces 3 et 7 : aimez-vous le glissé des doigts ?
Pièce 5 : Vous êtes-vous entraîné à rétracter, à rétracter, à rétracter vos doigts avec plusieurs vitesses ?

(Décembre 1992.)

Un nouvel art de toucher le Clavecin.

Microludes pour le concert.

A jouer en ordre ou en extraits.

Tristan-Patrice Challulau.

1991.

Op 30.

0' *

Très vif

1

* 0': jouez sans aucun rang de cordes, mais en marquant le plus possible les dynamiques du jeu tendre (PP) au jeu dur voire très dur où l'on "entend le bois" (FF).

On peut faire immédiatement la reprise sur le clavier du haut (8') tout en conservant volontairement et très nettement les divers touchers.

(Scolastiquement le toucher dur est peu ou pas permis.)

40 = ♩

8' seal

(5/4) ten. e accel

(4/4) (dim.)

(3/4)

(2/4)

(1/4) (ten.)

(5/4) (ten. e accel/rall)

rall

Rubato molto, (lent.)

3

8' seul

Handwritten musical score for the first system. The treble staff begins with a treble clef and a key signature of one sharp (F#). The first measure contains a quarter rest followed by a quarter note G4 with a sharp sign, a quarter note A4 with a sharp sign, a quarter note B4 with a sharp sign, and a quarter note C5 with a sharp sign. Above these notes are fingerings 1, 2, 3, and 5. A slur covers the last three notes, with a '4' written below. A 'ten.' marking is below the first measure. The second measure has a quarter note G4 with a sharp sign, a quarter note F#4, and a quarter note E4. Above the G4 is a '4', and above the F#4 and E4 are '3 2 1'. A 'ten.' marking is below. The third measure has a quarter note G4 with a sharp sign, a quarter note F#4, a quarter note E4, and a quarter note D4. Above the G4 is a '5', above the F#4 is a '4', above the E4 is a '3', and above the D4 is a '2'. A 'ten.' marking is below. The fourth measure has a quarter note C4, a quarter note B3, and a quarter note A3. Above the C4 is a '1', above the B3 is a '2', and above the A3 is a '1'. A '3' is written below. The bass staff has a bass clef and a key signature of one sharp. The first measure has a whole rest with a '4' below. The second measure has a quarter note G3 with a sharp sign and a quarter note F#3. A '3' is written below. The third measure has a quarter note G#3 and a quarter note F#3. A '2' is written below. The fourth measure has a quarter note G3 with a sharp sign and a quarter note F#3. A '1' is written below.

Handwritten musical score for the second system. The treble staff continues with a quarter note G4 with a sharp sign, a quarter note F#4, and a quarter note E4. Above the G4 is a '2', above the F#4 is a '4', and above the E4 is a '5'. A 'ten.' marking is above. The next measure has a quarter note G4 with a sharp sign, a quarter note F#4, and a quarter note E4. Above the G4 is a '4', above the F#4 is a '4', and above the E4 is a '3'. A 'ten.' marking is above. The following measure has a quarter note G4 with a sharp sign, a quarter note F#4, and a quarter note E4. Above the G4 is a '5', above the F#4 is a '4', and above the E4 is a '3'. A 'ten.' marking is above. The system ends with a double bar line. The bass staff has a quarter note G3 with a sharp sign and a quarter note F#3. A '4' is written below. The next measure has a quarter note G3 with a sharp sign and a quarter note F#3. A '4' is written below. The following measure has a quarter note G3 with a sharp sign and a quarter note F#3. A '4' is written below. The system ends with a double bar line.

Handwritten musical score for the third system. The treble staff begins with a quarter note G4 with a sharp sign, a quarter note F#4, and a quarter note E4. Above the G4 is a '1', above the F#4 is a '2', and above the E4 is a '1'. A '3' is written below. A 'ten.' marking is below. The next measure has a quarter note G4 with a sharp sign, a quarter note F#4, and a quarter note E4. Above the G4 is a '5', above the F#4 is a '4', and above the E4 is a '3'. A 'ten.' marking is below. The following measure has a quarter note G4 with a sharp sign, a quarter note F#4, and a quarter note E4. Above the G4 is a '4', above the F#4 is a '3', and above the E4 is a '2'. A 'ten.' marking is below. The system ends with a double bar line. The bass staff has a quarter note G3 with a sharp sign and a quarter note F#3. A '3' is written below. The next measure has a quarter note G3 with a sharp sign and a quarter note F#3. A '5' is written below. The following measure has a quarter note G3 with a sharp sign and a quarter note F#3. A '4' is written below. The system ends with a double bar line.

Handwritten musical score for the fourth system. The treble staff begins with a quarter note G4 with a sharp sign, a quarter note F#4, and a quarter note E4. Above the G4 is a '1', above the F#4 is a '2', and above the E4 is a '1'. A '3' is written below. A 'ten.' marking is below. The next measure has a quarter note G4 with a sharp sign, a quarter note F#4, and a quarter note E4. Above the G4 is a '5', above the F#4 is a '4', and above the E4 is a '3'. A 'ten.' marking is below. The following measure has a quarter note G4 with a sharp sign, a quarter note F#4, and a quarter note E4. Above the G4 is a '5', above the F#4 is a '4', and above the E4 is a '3'. A 'ten.' marking is below. The system ends with a double bar line. The bass staff has a quarter note G3 with a sharp sign and a quarter note F#3. A '1' is written below. The next measure has a quarter note G3 with a sharp sign and a quarter note F#3. A '4' is written below. The following measure has a quarter note G3 with a sharp sign and a quarter note F#3. A '4' is written below. The system ends with a double bar line.

4 Toccata (Entomologique I)

Le plus vif possible (♩♩.)

8+8'
acc

Handwritten musical notation for the first system. It consists of two staves. The first staff has a treble clef and contains a series of chords and notes with fingerings (4 3 2 1) and a circled '7' over an '8'. The second staff has a bass clef and contains notes with fingerings (3 2 1) and (4 3 2 1). The system ends with a double bar line and the instruction '(dim.)'.

Handwritten musical notation for the second system. It consists of two staves. The first staff has a treble clef and contains notes with fingerings (4 3 2 1) and (3 2 1). The second staff has a bass clef and contains notes with fingerings (3 2 1) and (4 3 2 1). The system ends with a double bar line and the instruction '(dim.)'.

Handwritten musical notation for the third system. It consists of two staves. The first staff has a treble clef and contains notes with fingerings (3 2 1) and (4 3 2 1). The second staff has a bass clef and contains notes with fingerings (4 3 2 1) and (3 2 1). The system ends with a double bar line and the instruction '(dim.)'.

Handwritten musical notation for the fourth system. It consists of two staves. The first staff has a treble clef and contains notes with fingerings (10/8) and (7/8). The second staff has a bass clef and contains notes with fingerings (4 3 2 1) and (3 2 1). The system ends with a double bar line and the instruction '(senza rall)'.

4321 321 (Sim.)

4321 321

(Senza rall)

(4321)

8'+8'+4'+1uth

Lent

5

* rétracter vivement les doigts dans l'ordre indiqué (*)

(* simile)

ad libe

Ad lib. (Non sans nostalgie) 6

8' bas

8' haut

ten.

ten.

ten.

ten.

ten.

Sans lenteur

7

8'seul

(rall) Tpo rall

(aue!)

8'8'
acc

10 Toccata (Entomologique II)

Extrêmement vite

8'+4'
seul

Un poco ad lib.

($\circ = 4'' \approx 7''$)

12

8'+8'
a.c.

Vif rall - - - -
Vif rall - - - - Vif rall - - - - Vif rall - - - - Vif rall - - - -

Vif rall - - - - Vif rall - - - - Vif rall - - - - Vif rall - - - - Vif rall - - - -

(13'' a 15'')

Vif rall - - - - - - - - - -